

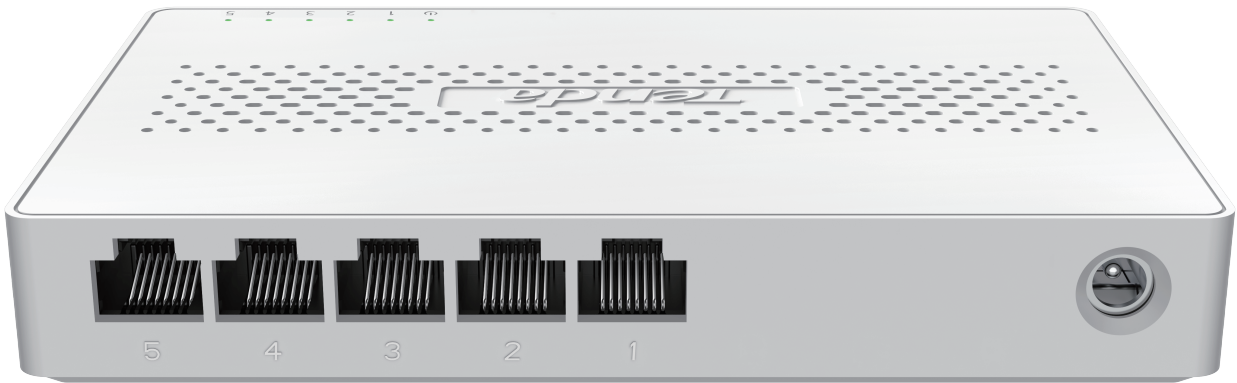
**Tenda**



# SM105

5-Port 2.5G Ethernet Switch

Link  
More



# SM105

## 5-Port 2.5G Ethernet Switch

### Products Description

SM105 is a 5-port 2.5G Ethernet switch independently designed by Tenda. It provides 5\*2.5Gbps RJ45 ports and can be connected to computers, NAS, IPTV, WIFI7 AP, etc. to meet the needs of high-speed Internet access. It is an perfect access device for high-speed network deployment in SMEs,SOHOs,villa or wireless networking scenarios.

## Key Feature

---

- Compliant with IEEE802.3/u/ab/bz/x/z
- 5\*100/1000/2500Mbps RJ45 ports;
- 16 K MAC address table and MAC address auto learning
- IEEE 802.3x full duplex flow control and half duplex backpressure flow control
- 25 Gbps switching fabric for non-blocking wire speed forwarding
- Desktop mounting & Wall mounting

## Product Features

---



### High-speed Bandwidth

The switch provides five 2.5 Gbps RJ45 ports to ensure high-speed network requirements



### Small and Exquisite

Equipped with plastic shell, mini shape and exquisite design



### Plug and Play

Plug and play, you can easily use a variety of networking environments without configuration

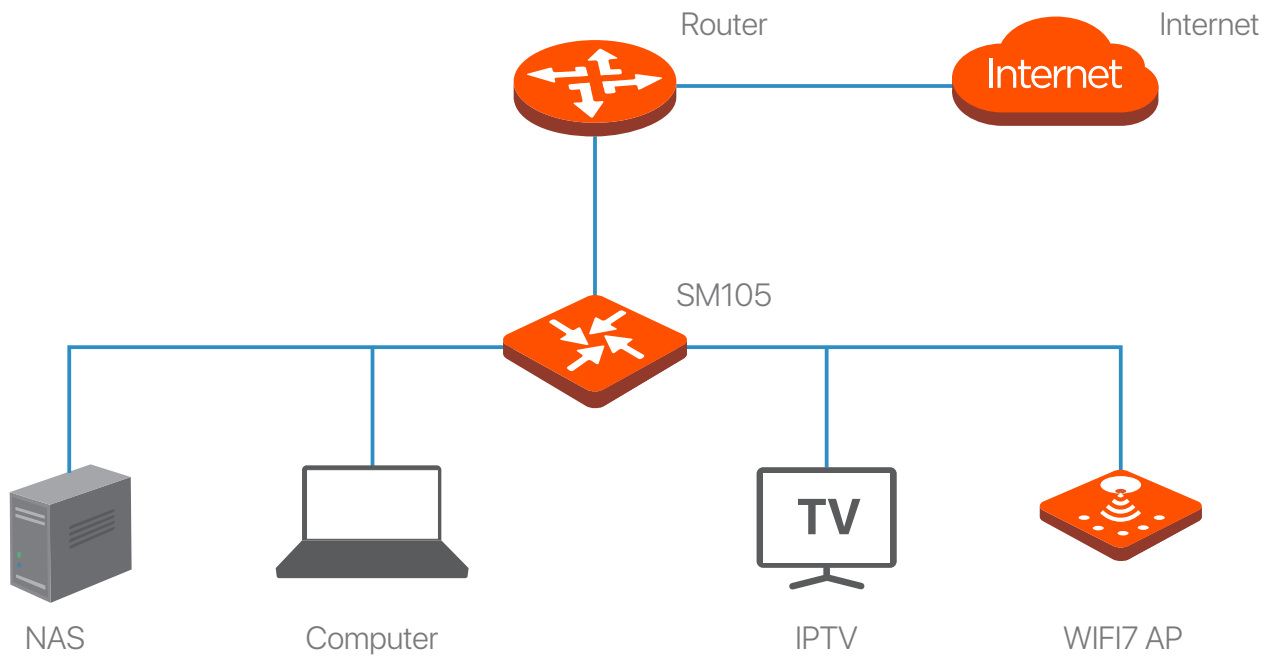


### Smooth upgrade

Easily and smoothly upgrade bandwidth to 2.5G without changing the original network architecture

# Application

---



# Product specifications

Product Model	SM105
Specifications	
Standard	Compliant with IEEE802.3/u/ab/bz/x
LED Indicators	1 * Power 5 * Link/Act
Ports	5*2500Mbps RJ45 ports
Forwarding Mode	Store-and-forward
Switching Capacity	25Gbps
Forwarding Rate	18.6Mpps
MAC Address Table	16K
Power Adapter	Input: 100-240V AC 50/60Hz Output: 12V 1A DC
Dimensions (L × W × H)	142*90*24mm
Environment	Operating temperature: 0°C - 40°C Storage temperature: -40°C - 70°C Operating humidity: (10% - 90%) RH, non-condensing Storage humidity: (5% - 90%) RH, non-condensing

## Software Features

### **SHENZHEN TENDA TECHNOLOGY CO.,LTD.**

Tenda Technology Bldg.Int' IE-City,  
#1001 Zhong Shan Yuan Rd.,Nanshan District,Shenzhen China.

E-mail: [support@tenda.com.cn](mailto:support@tenda.com.cn)

Tel: +86-755-2765 7098

Fax: +86-755-2765 7178

PC: 518055

